



PRODUCTS **SOLUTIONS CATALOG**

APECUS
Power solutions for all



POWER FOR BUSINESS CONTINUITY

At APECUS, our commitment to excellence begins long before a sale is made. We believe in fostering close engagements with our clients, understanding their unique needs, challenges, and goals. By prioritizing these relationships, we ensure that every solution we deliver is tailored to meet the specific requirements of our clients, maximizing their satisfaction and success.

From the initial pre-sales consultation to the final implementation phase, our dedicated team works tirelessly to provide highly reliable solutions. We believe in going above and beyond to exceed expectations, offering expertise, guidance, and support at every step of the process. Our goal is not just to deliver a product or service but to become a trusted partner in our clients' journey towards success.

APECUS believes in:

A - Advancing innovation in energy solutions

P - Powering greener future

E - Embracing clean and efficient technologies

C - Commitment to clean energy

U - Uniting expertise and resources

S - Spearheading a new era in the energy sector



30 YEARS OF EXPERTISE



OUR EXPERTISE

- Backup Power Management Systems
- Industrial Power Systems and Solutions
- Green Energy Power Systems and Solutions
- Energy Storage System Solutions
- EV Charging Systems
- Engineering Services & Support

OUR MISSION

APECUS provides the highest-quality products, solutions, and services with strong commitment to achieving total customer satisfaction. APECUS's long history of UPS expertise encompasses small, medium and large data centers as well as industrial applications.

OUR QUALITY

To ensure the highest level of product quality, our professional team follows strict international technology standard - from research, manufacturing to implementation. Our production facilities are certified with:

- ISO9001:2008
- ISO14001:2004
- OHSAS18001:2007



Application | IT Server

MODEL LIST

Main Systems



Model	Prime III RT UPS	ELITE III RT UPS	ELITE IV RT UPS	DYNAMIC SRLI UPS	CLASSIC PRO UPS	DYNAMIC SR UPS
Product Type	UPS (Single Phase Online Double Conversion)			UPS (Three Phase Online Double Conversion)		
Power Rating	1kVA to 3kVA	6kVA to 10kVA		6kVA to 32kVA	50kVA to 200kVA	10kVA to 200kVA
Function Description	<ul style="list-style-type: none">• High power density• Output power factor 1.0• Rack/Tower convertible• Smart charger design• Hot-Swappable battery• Intelligent fan speed regulation• Load segment settable	<ul style="list-style-type: none">• 3 Layers IGBT Technology• Output power factor 1.0• Zero output transfer time• Charging/Rectifier/Inverter fully digital control technology• N+X parallel redundancy support maximum 4 units in parallel• Intelligent fan speed regulation		<ul style="list-style-type: none">• Sub-rack Design• Output power factor 0.9• N+X module-level redundancy UPS system• Lithium Battery compatible	<ul style="list-style-type: none">• 3 level IGBT inverter topology.• Efficiency up to 96%• Support 30qty to 50qty of batteries per string• Unity power factor• Support generator input• Small footprint for a 3 Phase UPS• Parallel redundancy of up to 6 units• Support Load Bus Synchronization (LBS) function for 2N system	<ul style="list-style-type: none">• Unity power factor• Parallel and Modular Redundancy• High efficiency of up to 99%• Smart Charging Management System Comprehensive Monitoring Management• Load Bus Synchronization Technology• Smart Sleep Function to achieve high efficiency.

Auxiliary Products



Model	Static Transfer Switch	Automatic Transfer Switch	Brilliance Gate BMS	HubPod Maintenance Bypass Switch	
Product Type	Static Transfer Switch (STS)	Automatic Transfer Switch (ATS)	Battery Monitoring System	External Maintenance Bypass Switch	
Features / Power Rating	Choices of 16A / 32A / 63A load	Choices of 16A / 32A / 63A load	Real time monitoring of up to 4 strings of batteries Balancing between batteries Data Logging & Analysis	For 1kVA to 3kVA UPS	For 6kVA to 10kVA UPS
Function Description	<ul style="list-style-type: none">• Dual input static switch• Wide power adaptability• Transfer time less or equal to 6ms• Over current and lightning protection• User selectable priority of supply• RS232 and status output interface	<ul style="list-style-type: none">• Auto-transfer between Primary and Secondary Power Sources• Short Transfer Time• LED Indicator for Power Status• 8 Outlets (8*IEC C13), 2 Inputs (2 Power Cords Rear)• 1U Rack-mount	<ul style="list-style-type: none">• Monitor individual battery's Voltage, internal resistance and battery temperature• Battery's state of charge and state of health monitoring• Real time status display, history data records and curve analysis• Build in web server• Humidity & temperature monitoring as optional function	<ul style="list-style-type: none">• Allows UPS maintenance or replacement of the UPS without discontinuing power to critical equipment.• Compatible with any brand of UPS system.• Flexible plug-and-play connect ability for both input and output.• Easy to use rotary switch and indicators make the unit simple to operate.• Improved availability by routing utility power to attached equipment	

Application | Datacenter

MODEL LIST

Main Systems



Model	PRESTIGE UPS	SUPREME PRO UPS	PRESTIGE PRO UPS
Product Type	UPS (Three Phase Online Double Conversion) using 10/15/20/25/30 power modules	MONOLITHIC MODULAR UPS (Three Phase Online Double Conversion)	LEAD ACID / LITHIUM UPS (Three Phase Online Double Conversion) using 50/60 power modules
Power Rating	10KVA to 1000KVA	150KVA to 1200KVA	50KVA to 1200KVA
Function Description	<ul style="list-style-type: none">• Modular design• High input/ Output power factor 1.0• 3-Level IGBT Technology. high efficiency is up to 95%• Support maximum 6 units in parallel• Load Bus Synchronization Technology• Loop parallel signal control system, avoid any single failure• Support supply of power to 100% unbalance load.	<ul style="list-style-type: none">• High input/ Output power factor 1.0• 3-Level IGBT Technology. high efficiency is up to 95%• Support supply of power to 100% unbalance load.• Support maximum 6 units in parallel• Load Bus Synchronization Technology	<ul style="list-style-type: none">• Modular design• High input/ Output power factor 1.0• 3-Level IGBT Technology. high efficiency is up to 96%• Support maximum 6 units in parallel• Lithium-Ion Battery Compatible• Load Bus Synchronization Technology• Loop parallel signal control system, avoid any single failure• Dual & Separate input source configuration

Auxiliary Products



Model	BM6000 BMS	EXTERNAL MAINTENANCE BYPASS SWITCH	SYSTEM PARALLEL MODULE
Product Type	Battery Monitoring System for Lead-Acid and Ni-Cad Batteries	External Maintenance Bypass Cabinet	System Parallel Module Cabinet
Features / Power Rating	Real time monitoring of up to 4 strings of batteries Balancing between batteries Data Logging & Analysis	For 60kVA to 1200kVA UPS	For 60kVA to 1200kVA UPS
Function Description	<ul style="list-style-type: none">• Monitor individual battery's Voltage, internal resistance and battery temperature• Battery's state of charge and state of health monitoring• Real time status display, history data records and curve analysis• Build in web server• Humidity & temperature monitoring as optional function	<ul style="list-style-type: none">• Allows UPS maintenance or replacement of the UPS without discontinuing power to critical equipment.• Compatible with any brand of UPS system.	<ul style="list-style-type: none">• Provides means to isolate each parallel connected UPS module output (for UPS module maintenance) and bypass switchgear to isolate the complete system for maintenance• Housed in a single free-standing cabinet with safety shields behind the doors for hazardous voltage protection.



Application | Industrial

MODEL LIST

Main Systems



Model	Verve UPS	HubPro E PRO UPS	Green Pro PRO UPS
Product Type	UPS (Single Phase Online Double Conversion)	UPS (Three Phase Online Double Conversion)	
Power Rating	1KVA to 20KVA	10KVA to 800KVA	10KVA to 800KVA
Function Description	<ul style="list-style-type: none">• Frequency isolation in both input and output, effective protection of load and equipment safety;• DC cold start function, DC loop with no surge current;• Two-stage phase-locked loop and efficient filter synchronized circuit,• Compatible with generator;• Reliable static bypass and extremely wide synchronization range;• Certified EN5009-2, GB/T17626;• In-build manual maintenance bypass switch;	<ul style="list-style-type: none">• Independent 3-phase inverter design, fully meets the requirement of 100% unbalanced load;• Adoption of DSP control technology, power redundancy design to achieve higher performance and adaptability;• Application of isolated air duct system, independent duct for power circuit and control circuit respectively to ensure effective cooling;• 3-stage equalized charging with temperature compensation• N+X non-master-slave self-adaptive parallel technology	<ul style="list-style-type: none">• 3 level IGBT rectification topology• Space vector pulse width modulation (SVPWM) technology to improve DC utilization while greatly improving product stability and efficiency, with 100% unbalanced load capacity;• DC/DC bidirectional conversion technology• Standard output isolation transformer to achieve electrical isolation• Isolation duct design is adopted to improve the dust-proof ability of the plate effectively and enhance the adaptability of the equipment to environmental conditions;

Auxiliary Products



Model	BM6000 BMS	EXTERNAL MAINTENANCE BYPASS SWITCH	SYSTEM PARALLEL MODULE
Product Type	Battery Monitoring System for Lead-Acid and Ni-Cad Batteries	External Maintenance Bypass Cabinet	System Parallel Module Cabinet
Features / Power Rating	Real time monitoring of up to 4 strings of batteries Balancing between batteries Data Logging & Analysis	For 60kVA to 1200kVA UPS	For 60kVA to 1200kVA UPS
Function Description	<ul style="list-style-type: none">• Monitor individual battery's Voltage, internal resistance and battery temperature• Battery's state of charge and state of health monitoring• Real time status display, history data records and curve analysis• Build in web server• Humidity & temperature monitoring as optional function	<ul style="list-style-type: none">• Allows UPS maintenance or replacement of the UPS without discontinuing power to critical equipment.• Compatible with any brand of UPS system.	<ul style="list-style-type: none">• Provides means to isolate each parallel connected UPS module output (for UPS module maintenance) and bypass switchgear to isolate the complete system for maintenance• Housed in a single free-standing cabinet with safety shields behind the doors for hazardous voltage protection.



Application | OUTDOOR

MODEL LIST

Main Systems



Model	Omega 650/1100 UPS	Omega 2000/2500 UPS	Omega 3000UPS
Product Type	Outdoor UPS (Single Phase Line Interactive)		
Power Rating	650VA and 1100VA	2000VA and 2500VA	3000VA
Function Description	<ul style="list-style-type: none">• Line Interactive UPS Design• Pure Sinewave Output• Automatic Voltage Regulator (AVR)• Simple and Clear LCD Indicator• Wide Operating Temperature (-37°C to +74°C)• Programmable Dry Contacts• Various mode of Communication: USB B Type, RS-232, SNMP Ethernet port (optional)		

Auxiliary Products



Model	BM2000 BMS	PS700 OUTDOOR CABINET	PS1000 OUTDOOR CABINET	PS1400 OUTDOOR CABINET	PS2000 OUTDOOR CABINET
Product Type	Battery Monitoring System	Outdoor Cabinet			
Features / Power Rating	Real time monitoring of up to 2 strings of batteries Balancing between batteries Data Logging & Analysis	IP55 Rating – Cabinets suitable for installation in outdoor environments, such as roadsides, parks, roofs, mountainous areas, and flat grounds. To house in any 19inch system and equipment.			
Function Description	<ul style="list-style-type: none">• Monitor individual battery's Voltage, internal resistance and battery temperature• Battery's state of charge and state of health monitoring• Real time status display, history data records and curve analysis• Build in web server• Humidity & temperature monitoring as optional function	<ul style="list-style-type: none">▪ High reliability cooling devices with -48V DC input▪ High heat isolation performance lead to OPEX saving▪ Super anti-theft, European standard lock and enhanced fence▪ Fast deployment▪ Compact figure, easy land acquisition			

Application | TELECOMMUNICATIONS

MODEL LIST

Main Systems



Model	Flexcombi 40 Rectifier System	Flexcombi 60 Rectifier System	Flexcombi 120 Rectifier System	Flexcombi 200-3P Rectifier System	FlexCombi Rectifier Inverter System	FlexCombi Inverter System
Product Type	24VDC/48VDC Rectifier System, Single Phase Input			24VDC/48VDC Rectifier System, Three Phase Input	48VDC Rectifier Inverter System	48VDC Inverter System
Power Rating	40A, 240VAC/48VDC	60A, 240VAC/48VDC	120A, 240VAC/48VDC	200A, 400VAC/48VDC	30A, 230VAC/48VDC 1.25kVA	3kVA, 240VAC
Function Description	<ul style="list-style-type: none"> Within wide load range, the power factor over 0.99, input harmonic current component is below 5%, input voltage range 85~300Vac. High efficiency energy saving, able to operate with high efficiency at full load; Perfect surge protection performance, the product reliability and adaptability is highly improved; 19" standard power rack with hot swappable rectifier module, complete frontal operation, making the operation and maintenance safer, quicker and more convenient; Battery management function with temperature compensation, battery protection, charging current limit and battery capacity estimation; CAN bus distributed digital control, intelligent network design, providing RS485/RS232 telecom port and dry contact alarm port, flexible network enables remote monitoring with unattended operation; 				<ul style="list-style-type: none"> The 2U 19" Rectifier Inverter Integrated System can be used as a standalone system with both AC & DC outputs for industrial applications where a 230VAC and 48VDC backup is needed. Input harmonic current component is below 5%, input voltage range 85~300Vac. Perfect surge protection performance, the product reliability and adaptability is highly improved; 	<ul style="list-style-type: none"> Excellent overall efficiency and high regulation speed; " Hot-Plug-in" Design with backplane connection; Fault alarm and protection functions; High power density; CAN-BUS Interface; Temperature-controlled fan cooling; Excellent sinusoidal output.

Auxiliary Products



Model	BM2000 BMS	PS700 OUTDOOR CABINET	PS1000 OUTDOOR CABINET	PS1400 OUTDOOR CABINET	PS2000 OUTDOOR CABINET
Product Type	Battery Monitoring System	Outdoor Cabinet			
Features / Power Rating	Real time monitoring of up to 2 strings of batteries Balancing between batteries Data Logging & Analysis	IP55 Rating – Cabinets suitable for installation in outdoor environments, such as roadsides, parks, roofs, mountainous areas, and flat grounds. To house in any 19inch system and equipment.			
Function Description	<ul style="list-style-type: none"> Monitor individual battery's Voltage, internal resistance and battery temperature Battery's state of charge and state of health monitoring Real time status display, history data records and curve analysis Build in web server Humidity & temperature monitoring as optional function 	<ul style="list-style-type: none"> High reliability cooling devices with -48V DC input High heat isolation performance lead to OPEX saving Super anti-theft, European standard lock and enhanced fence Fast deployment Compact figure, easy land acquisition 			



MODEL LIST

Grid Tied Solar Inverter

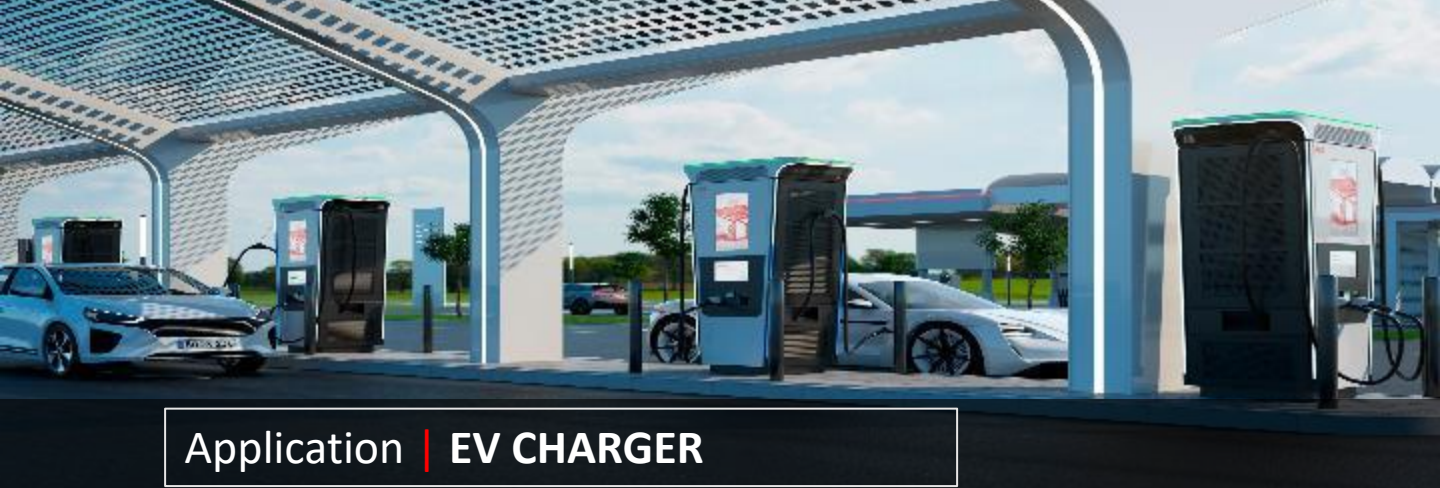


Model	SGT-3KM	SGT-5KM	TGT-20KM	TGT-30KM	TGT-40KM	TGT-70KM
Product Type	Single Phase Grid Tied Solar Inverter		Three Phase Grid Tied Solar Inverter			
Power Rating	750W to 3000W	4000W to 5000W	12kW to 20kW	20kW to 35kW	25kW to 40kW	50kW to 70kW
Function Description	<ul style="list-style-type: none">Two MPPT, adapt to the complex environment of roof, improve power generation.Adopt the latest technologies and combination of T-type three level topologies and SVPWM.Smart grid adaptive to meet the requirements of various power grid accesses.Support RS485,GPRS,WIFI, Ethernet.		<ul style="list-style-type: none">AC output power is adjustable between 1-100%.Smart grid adaptive to meet the requirements of various power grid accesses.Variety of monitoring modes: APP (one-button registration), large screen data monitoring center, cloud monitoring platform.Support RS485,GPRS,WIFI, Ethernet.IP65 protection level, suitable for various installation environments.Bus capacitors consist of advanced film capacitors, designed with the latest thermal simulation technology for longer lifespan.		<ul style="list-style-type: none">2 MPP Trackers, high single circuit tracking accuracy, fast dynamic response160% DC Input OversizingMaximum efficiency 98.4%. Wide MPPT voltage range: 200V-1000VCompatible with high power modules.Smart I-V Curve Diagnosis FunctionIntelligent Fault DetectionSupport RS485 (WiFi/GPRS/Ethernet optional)IP66 Protection degreeDC & AC Type II SPD: prevent lightning damage	

Off Grid Solar Inverter



Model	OGI-1P5K	OGI-5KE
Product Type	Off Grid Solar Inverter	Off Grid Cabinet
Power Rating	1.5kW to 5kW	5kW
Function Description	<ul style="list-style-type: none">High PV input voltage rangeHigh AC input voltage range150% overloadOutput power factor is 1.Multi charging voltage settings & multi working modesNon linear load can be connectedBuilt in 100A MPPT solar charger	<ul style="list-style-type: none">High PV input voltage rangeHigh AC input voltage range200% overloadOutput power factor is 1.Multi charging voltage settings & multi working modesBuilt in 100A MPPT solar chargerUp to 9 units can be connected in parallel



Application | EV CHARGER

MODEL LIST

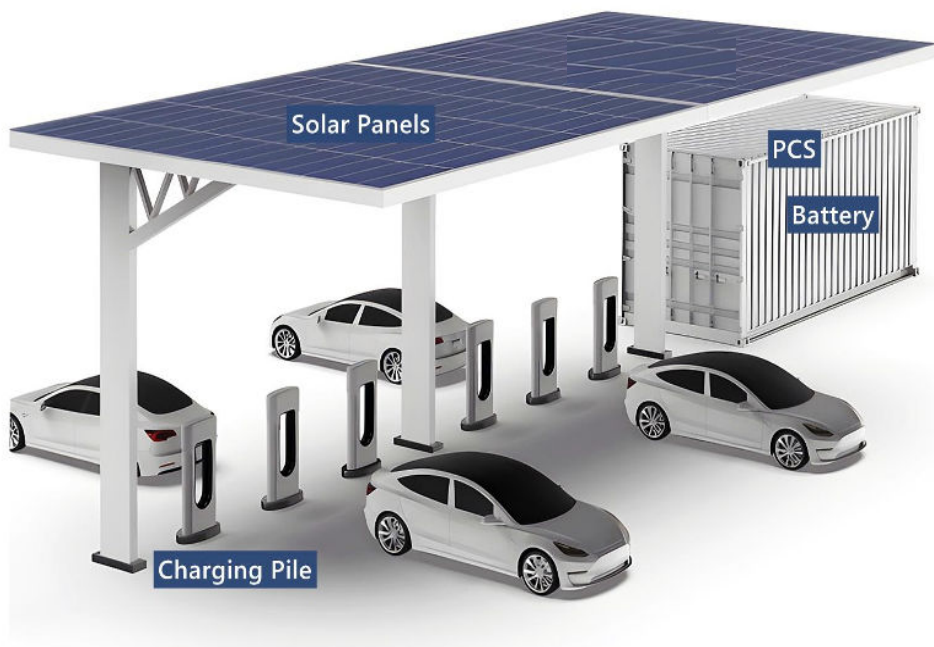
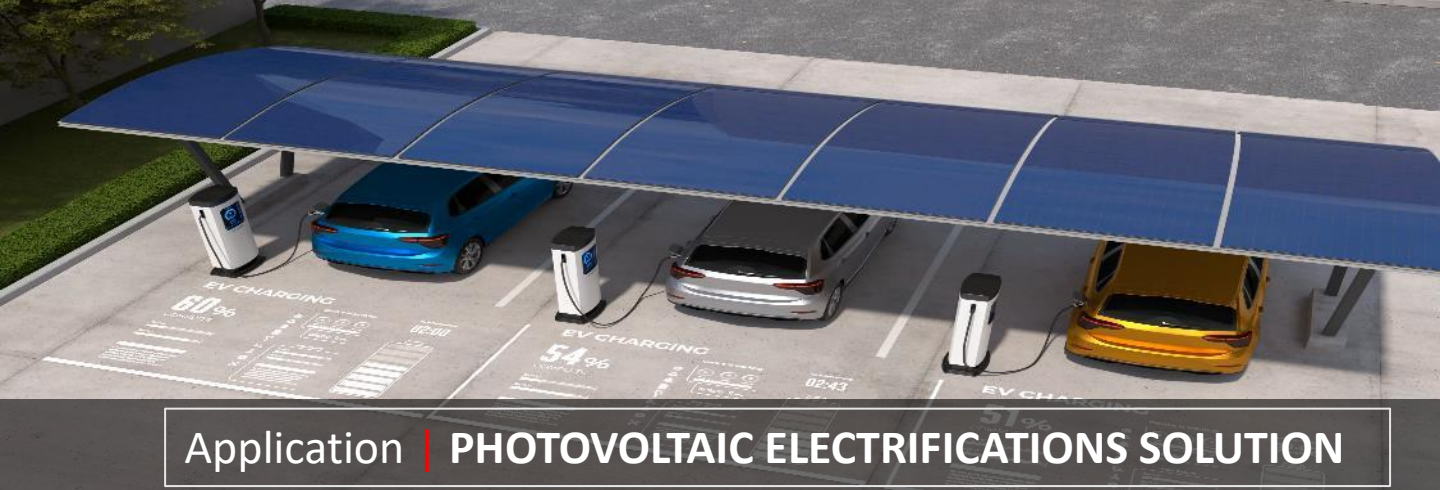
Main Systems



Model	EVCWM07AC	EVCWM11AC / EVCWM22AC
Product Type	Single Phase AC EV Charger	Three Phase AC EV Charger
Power Rating	7kW	11kW to 22kW
Function Description	<ul style="list-style-type: none">• Delicate appearance, simple operation, convenient installation;• High efficiency, reliable and stable performance;• Friendly interaction interface, 4.3-inch color touch screen;• Support multiple modes of charging, operation management and payment;• Support Ethernet or wireless telecommunication;• Support RFID Card/OCPP1.6 (optional);• Support Type-2 (optional);• Overload integrated Protection;• Support online data upgrade.	



Model	EVCCS60FC	EVCCS150FC
Product Type	DC EV Fast Charger	DC EV Fast Charger
Power Rating	60kW	150kW
Function Description	<ul style="list-style-type: none">• Built-in safety measures• User friendly interface• Flexible multi-protocol design• CCS combo 2 protocol compatible• OCPP Compliant• Durable enclosure• Wide temperature range: -25°C to +65°C• Data management and metering options• Multi-connector are suitable for all the EV cars.• Multi-language to meet for different end users.• Touch Screen to easy operation and view status.• Obvious signal light shows charging status.• Two side doors for checking inside easily.• Emergency button to stop immediately.• Two side doors for checking inside easily.• Tap RFID card to start charging.• Charge modules be inserted easily.	



Photovoltaic Electrifications solution is an innovative new energy vehicle charging solution using clean energy. It integrates photovoltaic power generation and energy storage, forming a microgrid that interacts with the public grid intelligently. The station operates in grid-connected and off-grid modes, and its energy storage system mitigates the impact on the local grid during high-current charging.

A journey towards sustainable vehicle charging through solar energy and energy storage.

Features:

- Power Security: Ensuring Reliability in Electricity Consumption.
- Empowering Energy Efficiency: Embracing for a Sustainable Tomorrow.
- Reducing Capacity Charges: Optimizing Efficiency for Cost Savings.

APECUS Technologies Pte Ltd
7030 Ang Mo Kio Ave 5
#06-50 Northstar@AMK
Singapore 569880
Tel: (65) 6570 8068
Fax: (65) 6570 8066
Website: www.apecus.com
Email: sales@apecus.com

Copyright © 2024 APECUS TECHNOLOGIES
All rights reserved
Rev 1.7