

High Performance Solutions For Mission Critical Operations

ELITE II RT UPS

- High Output Power Factor 0.9
- Patented rotational LCD display
- Power Rating of 6KVA to 10KVA
- Online Double Conversion
- Up to 93.5% efficiency
- Rack/Tower Convertible
- Pure Sine Wave Output during Battery Operation
- N+X parallel redundancy



Your Power In Safe Hands

Only PowerHub UPS saves money and energy without sacrificing availability



LCD Control Panel

Provides an overview of UPS status and estimated battery runtime.



Rotational Display

Gives you the flexibility to orientate your display windows whenever you change the position of the UPS.



ECO Mode

When the UPS is connected to AC main supply and the load is not critical, UPS can be set to ECO mode in order to improve the power efficiency. In the event of AC interruption, UPS will transfer from bypass to inverter and supply power from the battery.

It's all about technology working for people rather than people working for technology



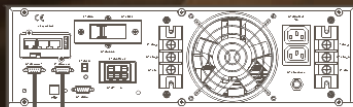
ELITE II RT series is an ideal solution to your server, industrial equipment, IT equipment, communication system and other networking equipment.

Armed with overload, low battery, abnormal AC input, short-circuit and over temperature protection capability, the Elite II RT UPS can guard your equipment from common power problems.

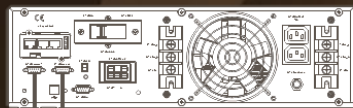
It is an ideal power protection solution mostly used in the finance, communications, medical, industrial and enterprises sector. It provides pure sine wave output during battery operation. This results in the connected devices receiving high quality electrical input and operates smoothly in the event of power outage.

N + X Parallel Redundancy

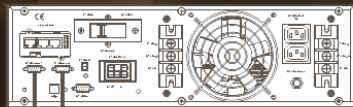
To achieve a higher capacity and/or increase reliability, the outputs of up to four UPS modules can be programmed to operate in parallel and the built-in parallel controller in each UPS ensures automatic load sharing. Shielded and double insulated control cables are to be interconnected in a ring configuration as shown on the right.



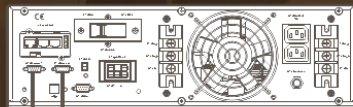
UPS #1



UPS #2



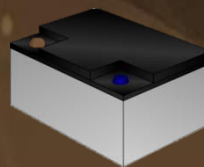
UPS #3



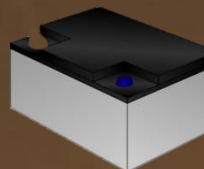
UPS #4

Intelligent Charging Method

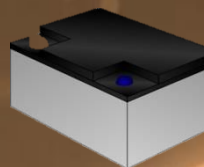
This method is applied to safeguard the battery life without compromising the duration of charging. Elite RT UPS adopts advanced three-stage charging method:



Stage #1: Constant current mode



Stage #2: Constant voltage mode



Stage #3: Floating mode

Applications:

- Data Center
- Point of Sale
- Router, Hub and Network devices
- Commercial facility
- Precision instrument



Given its rack/tower convertible design, it possesses many powerful features like the N+X parallel redundancy, DSP-controlled technology, high input & output power factors, superior input voltage window for energy saving, estimated remaining time and ECO mode that makes this UPS superior in itself.

EXCELLENT PERFORMANCE

HIGH RELIABILITY

BEST QUALITY

The PowerHub Elite UPS range is dedicated to the electrical protection of your IT networks and loads against power supply problems and electrical disturbances.

PowerHub Elite II RT Series

MODELS

MODELS	Elite II RT 6K-SS (Ext)	Elite II RT 10K-SS (Ext)
Rating (VA/Watt)	6000/5400	10000/9000
Dimension WxDxH (mm)	443x580x3U (UPS) 443x720x3U (Battery Cabinet)	443x580x3U (UPS) 443x720x3U (Battery Cabinet)
Weight (kg)	23 (UPS) 67 (Battery)	25 (UPS) 75 (Battery)

BATTERY

Battery Voltage (VDC)	±96/108/120 (Optional)
BATT Type / Number	12V/9Ah x 2 0
Recharge Time	6 to 8 hours (to 90% capacity)
Charger Current (A)	10 (Ext)

Due to ongoing product improvements, specifications are subject to change without notice.

TECHNICAL SPECIFICATIONS

Electrical Input

Input Voltage: 220/230/240VAC

Frequency Range : 50Hz - 45~55Hz,
60Hz - 54~66Hz

Electrical Output

Output Voltage: 220/230/240VAC ± 2%

Power Factor: 0.9

Crest Factor: 3:1

Efficiency: 91% max (online mode)

Transfer Time: 0ms (Mains - Battery)
<4ms (Mains – Bypass)

Overload: Load ≤ 110% : 60mins, ≤ 125% : 10mins,
≤ 150%: 1min, ≥150% : 200ms

Charger Current: 10A (Ext)

Typical Recharge Time: 6 to 8 hours (to 90% capacity)

THD: <2% (linear load), <5% (non-linear load)

Environmental

Operating Temperature: 0 ~ 40°C

Relative Humidity: 0 ~ 90%, No condensation

Noise: <55dB

Altitude: 1500m

Standards

Safety: IEC/EN62040-1, IEC/EN60950-1

EMC: IEC/EN62040-2, IEC61000-4-2, IEC61000-4-3,
IEC61000-4-4, IEC61000-4-5, IEC61000-4-6, IEC61000-4-8

Others

Communication: RS232, USB, Relay card (optional),
SNMP card (optional)

Display: LCD indicates Load/Battery/Input/Output

Alarm: AC failure, Low battery, Overload, Fault