

# Eaton 9130 UPS



## Product snapshot

- Product rating:** 700 to 6000 VA
- Voltage:** 220-240 V
- Frequency:** 50/60 Hz (auto-sensing)
- Configuration:** Rackmount or tower

### Advanced power protection for:

- IT and networking environments
- Servers, networking gear
- Telecommunications, VoIP, security systems
- Medical systems
- Diagnostics and medical screening
- Patient record archives
- Manufacturing systems
- Chip fabrication
- Pharmaceutical production
- Chemical processing

## Features

- Protects against downtime, data loss and process interruption by providing continuous, clean power
- Offers premium performance with a 0.9 power factor and >95 percent efficiency
- Increases battery service life and system uptime with ABM™ battery charging technology
- Enables prolonged runtime of essential equipment during power outages by allowing for orderly, remote shutdown of non-critical systems or processes by Load Segment Control
- Provides installation flexibility with a choice of rack or tower designs, both conserving valuable space
- Enhanced monitoring and configuration capability through easily navigated multilingual graphical display

The Eaton® 9130 UPS, Powerware® series, resolves utility power problems and delivers superior power protection for IT and networking equipment, medical systems, manufacturing process control—or anywhere critical equipment and applications require clean, continuous power.

### Double-conversion design for superior power protection

The 9130 is constantly monitoring power conditions—regulating both voltage and frequency. Even when presented with the most severe power problems, this UPS's output remains within three percent of nominal voltage.

With a wide input voltage range, the 9130 does not depend on batteries to smooth out minor power fluctuations. Batteries are conserved for those times when utility power is highly unstable or completely out. If an outage occurs, the 9130 transfers to battery with

zero interruption in power, making this an ideal UPS for sensitive and critical equipment.

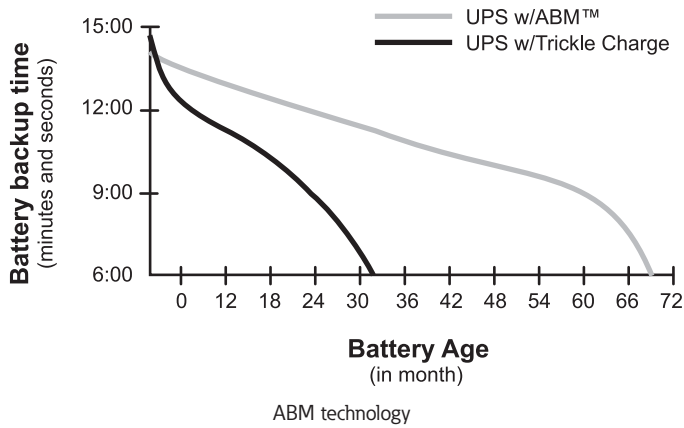
### More real power for less cost in less space

**More real power.** High 0.9 output power factor enables the 9130 to provide its full power capability to modern IT equipment that may have a wide range of leading and lagging power factors. With a 0.99 input power factor, this UPS avoids the disturbances that some energy converters tend to cause.

**High efficiency.** The more efficient the UPS, the lower your utility and cooling bills. When power conditions are within acceptable limits, the 9130 can operate in a high-efficiency mode providing 95 percent or higher efficiency.



Powering Business Worldwide



ABM technology



Load segments



Multilingual LCD

**One platform, two form factors, dozens of choices.** Up to 3000 VA of UPS power is packed into only 2U of rack space. The tower option is about the size of a modern, compact PC.

**Maximum availability for critical systems**

**Stronger, longer battery life.** Eaton Advanced Battery Management (ABM) technology uses sophisticated sensing circuitry and an innovative three-stage charging technique, that constantly monitors the battery charging status, and as a result only recharges when necessary, so ultimately the battery experiences less corrosion and battery service life is prolonged by up to 50%.

The 9130 provides up to 60 days' notice of the end of useful battery service life. You have ample time to hot-swap batteries without ever having to shut down connected equipment.

**Battery runtime for minutes or hours.** During a power outage, internal batteries in the 9130 keep loads running long enough to gracefully shut down systems. Add more runtime at any time, with up to four external hot-swappable battery modules to run systems for hours if necessary.

**Maximum battery runtime for critical equipments.** Using Load Segment Control, you can manage scheduled shutdowns and sequential startups of protected loads. During a power outage, you could shut down power to non-critical devices, thereby extending battery backup time available for critical devices. You can also use this feature to remotely re-boot locked-up equipment.

**Visibility, control and management from anywhere**

**Continuous monitoring for premium availability.** The 9130 continually monitors voltage, temperature, internal element functions, battery health, battery state-of-charge and runtime remaining. If the UPS detects a potential problem with any of these measures, it sends alarms or takes corrective action, with no interruption in power. At the end of an alarm condition, the 9130 automatically reverts from bypass to normal operation.

**Local UPS status at a glance.** An on-site user can configure and monitor many features of the 9130 using a large, bright, backlit display with easy navigation—available in multiple languages. LEDs provide at-a-glance insight into system status.

BATTERY RUNTIMES*	Internal batteries		+1 EBM		+2 EBMs		+3 EBMs		+4 EBMs	
	75% Load	50% Load	75% Load	50% Load	75% Load	50% Load	75% Load	50% Load	75% Load	50% Load
<b>Tower models</b>										
9130-700 VA	12	19	N/A	N/A	N/A	N/A	N/A	N/A	N/A	N/A
9130-1000 VA	13	22	55	82	103	186	151	250	223	312
9130-1500 VA	11	18	47	81	83	143	126	208	195	262
9130-2000 VA	21	34	81	130	145	198	184	293	248	431
9130-3000 VA	12	20	49	79	90	143	134	180	165	240
9130-5000 VA	20	34	81	136	153	232	217	328	273	477
9130-6000 VA	16	27	66	107	120	194	178	267	231	372
<b>Rack models</b>										
9130-1000 VA, 2U	13	22	55	82	103	186	151	250	223	312
9130-1500 VA, 2U	11	18	47	81	83	143	126	208	195	262
9130-2000 VA, 2U	13	24	63	95	118	190	170	242	221	345
9130-3000 VA, 2U	8	14	34	62	70	92	96	156	130	211

\* Runtimes are shown at a 0.7 power factor. Backup times are approximate and may vary with equipment, configuration, battery age, temperature, etc.

**Remote monitoring.** The 9130 comes complete with the Eaton Software Suite CD including SNMP-compatible power management software providing control and visibility over all your UPS systems. For example, you can establish a prioritized shutdown of network devices and client/server applications, test all networked UPS systems from one node, and stay informed of power problems by email.

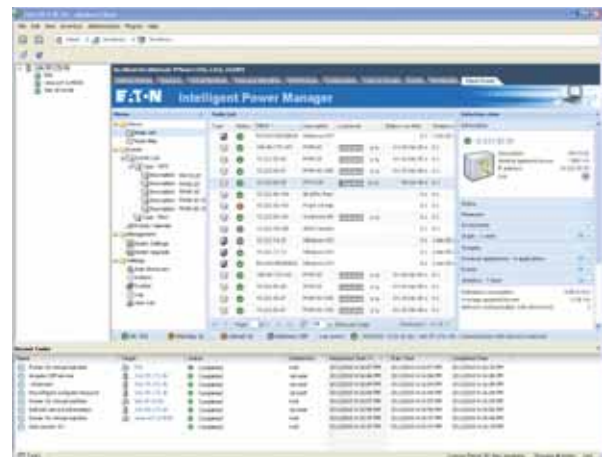
**Choice of connectivity options.** Connectivity options are available for almost any networking environment. The standard unit comes with USB and RS-232 serial communication ports. You can customize your UPS by adding communication cards options that will allow to:

- Integrate the UPS to SNMP based Network Management Systems with a Web/SNMP card and manage it through standard web browsers
- Monitor and shut down multiple servers with different operating systems
- Send relay-contact alarm notifications to remote security systems

### Complementary options

You can complement your 9130 with several options, among which:

- A maintenance bypass for easy replacement of the UPS without powering down critical systems
- Power distribution units streamline the distribution of power throughout a data center, rack or enclosure



Remote Monitoring - IPM

Description	Part Number	Rating (VA/Watts)	Input connection	Output receptacles	Dimensions H x W x D, mm	Weight, kg
<b>Tower Models 230V, 50/60Hz</b>						
9130-700i	103006433-6591	700/630	C14	(6) C13	230 x 160 x 350	12.2
9130-1000i	103006434-6591	1000/900	C14	(6) C13	230 x 160 x 380	14.5
9130-1500i	103006435-6591	1500/1350	C14	(6) C13	230 x 160 x 430	19.0
9130-2000i	103006436-6591	2000/1800	C14	(8) C13, (1) C19	325 x 214 x 410	34.5
9130-3000i	103006437-6591	3000/2700	C20	(8) C13, (1) C19	325 x 214 x 410	34.5
9130-5000i	103007841-6591	5000/4500	Hardwire	Hardwire	574 x 244 x 542	75.5
9130-6000i	103007842-6591	6000/5400	Hardwire	Hardwire	574 x 244 x 542	75.5
<b>Tower Model 230V, 50/60Hz, without internal battery</b>						
9130-6000i	103007875-6591	6000/4500	Hardwire	Hardwire	574 x 244 x 542	27.5
<b>Tower Models 120V, 50/60Hz</b>						
9130-700L	103006426-6591	700/630	5-15P	(6) 5-15R	230 x 160 x 350	12.2
9130-1000L	103006427-6591	1000/900	5-15P	(6) 5-15R	230 x 160 x 380	14.5
9130-1500L	103006428-6591	1500/1350	5-15P	(6) 5-15R	230 x 160 x 430	19.0
9130-2000L	103006429-6591	2000/1800	5-20P	(1) L5-20R, (4) 5-20R	325 x 214 x 410	34.5
9130-3000L	103006430-6591	3000/2700	L5-30P	(4) 5-20R, (1) L5-30R	325 x 214 x 410	34.5
<b>Tower Extended Battery Modules</b>						
9130 EBM 36 (1kVA)	103006438-6591	NA	NA	NA	230 x 160 x 380	18.5
9130 EBM 48 (1.5kVA)	103006439-6591	NA	NA	NA	230 x 160 x 430	24.3
9130 EBM 96 (2/3kVA)	103006440-6591	NA	NA	NA	325 x 214 x 410	50.0
9130 ebm 240 (5/6kVA)	103007843-6591	NA	NA	NA	574 x 244 x 542	111.0
<b>Rack Models 230V, 50/60Hz</b>						
9130-1000IRM 2U	103006455-6591	1000/900	C14	(6) C13	86.5 x 438 x 450	16.0
9130-1500IRM 2U	103006456-6591	1500/1350	C14	(6) C13	86.5 x 438 x 450	19.0
9130-2000IRM 2U	103006457-6591	2000/1800	C14	(8) C13, (1) C19	86.5 x 438 x 600	29.0
9130-3000IRM 2U	103006463-6591	3000/2700	C20	(8) C13, (1) C19	86.5 x 438 x 600	29.5
<b>Rack Models 120V, 50/60Hz</b>						
9130-1000RM 2U	103006448-6591	1000/900	5-15P	(6) 5-15R	87 x 438 x 450	16.0
9130-1500RM 2U	103006449-6591	1500/1350	5-15P	(6) 5-15R	87 x 438 x 450	19.5
9130-2000RM 2U	103006450-6591	2000/1800	5-20P	(6) 5-20R, (1) L5-20R	87 x 438 x 600	29.0
9130-3000RM 2U	103006452-6591	3000/2700	L5-30P	(6) 5-20R, (1) L5-30R	87 x 438 x 600	29.5
<b>Rack Extended Battery Modules</b>						
9130RM EBM 36 (1kVA)	103006458-6591	NA	NA	NA	86.5 x 438 x 450	22.1
9130RM EBM 48 (1.5kVA)	103006459-6591	NA	NA	NA	86.5 x 438 x 450	28.1
9130RM EBM 72 (2/3kVA)	103006460-6591	NA	NA	NA	86.5 x 438 x 600	41.1

**TECHNICAL SPECIFICATIONS**

<b>General</b>	
User interface	Graphical LCD with blue backlight and text in English, French, German, Russian and Spanish
LEDs	Four status-indicating LEDs
Topology	True online, double-conversion
Diagnostics	Full system self-test
UPS bypass	Automatic bypass
Dimensions	See models table
Rail kit	Included with all rackmount units

<b>Electrical Input</b>	
Nominal voltage	120V, 220–240V
Voltage range	120V: 90–138 Vac 230V: 160–276 Vac
Power drawn from UPS	700: 3.0A @230V, 5.8A @120V 1000: 4.3A @230V, 8.3A @120V 1500: 6.5A @230V, 12.5A @120V 2000: 8.7A @230V, 16.6A @120V 3000: 13A @230V, 25A @ 120V 5000: 21.7A @230V 6000: 26A @230V
Dedicated circuit breaker rating	<b>120V:</b> 700–1500 VA: 15A 2000 VA: 20A 2500–3000 VA: 30A
UPS input rating	<b>230V:</b> 700–2000 VA: 10A 3000 VA: 16A 5000 VA: 24A 6000 VA: 32A
Frequency	50/60 Hz
Frequency range	45–65 Hz

<b>Electrical Output</b>	
Power factor	0.9
On utility voltage	±3% of nominal regulation
On battery voltage	±3% of nominal regulation
Efficiency	>95% in high-efficiency mode; >86% in online mode
Frequency regulation	±3% Hz online
Load crest factor	3 to 1

<b>Battery</b>	
Battery type	VRLA 12V/9 Ah (both internal and external)
Battery runtime	See runtime table
Battery replacement	Hot-swappable internal and external batteries
Start-on-battery	Allows start of UPS without utility input

In the interests of continual product improvement all specifications are subject to change without notice.

<b>Communications</b>	
Serial port	RS-232 standard, for interface to power management software
USB port	HID standard, for communicating with Windows XP/ Vista
Relay output	Common alarm standard
Communications slot	Optional communication slots (BD Slot)
Optional communication cards	SNMP/Web card for direct control and monitoring in SNMP-based networks, monitoring of UPS status and meters through Web browser interface.  Relay card for integration to industrial environment and building management systems, remote shut-down for IBM AS/400 systems

<b>Environmental</b>	
Safety markings	120V: UL, CUL, VCCI 230V: CE, GS
EMC markings	120V: FCC Class B, EN55022 Class B (1.5 kVA and below); FCC Class A, EN55022 Class A (2.0 kVA and above) 230V: CE (per IEC/EN62040-2: Emissions, Category C1; Immunity, Category C2)
Audible noise	<50 dB
Ambient operating temperature	0°C (32°F) to +40°C (104°F)
Storage temperature	-20°C (-4°F) to +40°C (104°F) with batteries and -25°C (-13°F) to +55°C (131 °F) without batteries
Relative humidity	5–90% non-condensing

**Heat dissipation for all voltages: 240V and 120V**

9130 model	Watts
700 VA	103
1000 VA	140
1500 VA	196
2000 VA	252
3000 VA	317
5000 VA	520
6000 VA	630

SINGAPORE  
Tel : +65 6825 1684  
Fax : +65 6825 1689  
EatonSEA@eaton.com

INDONESIA  
Tel : +62 21 522 6181  
Fax : +62 21 522 6182

MALAYSIA  
Tel : +603 7804 3618  
Fax : +603 7803 6193

THAILAND  
Tel : +66 2575 0530  
Fax : +66 2575 1579

VIETNAM  
Hanoi  
Tel : +84 4 3936 5303  
Fax : +84 4 3936 5307

Ho Chi Minh  
Tel : +84 8 6255 6737  
Fax : +84 8 6255 6801

Eaton is the trade name, trademark, and/or service mark of Eaton Corporation or its subsidiaries and affiliates.