

# AFTERM

## Copperchase AFTERM for Windows

AFTERM is a PC-based AFTN terminal for use in Control Towers, Flight Briefing Units ... anywhere there is a requirement for receiving, transmitting and storing AFTN messages. In line with international requirements, up to 30 days traffic can be stored on the hard drive ready for immediate retrieval. The terminal is the economic entry point to the range of Copperchase message processing systems developed for the aviation industry. It can be easily upgraded to become a Copperchase AFGATE (AFTN Message Distributor) when required.

### Modern Technology

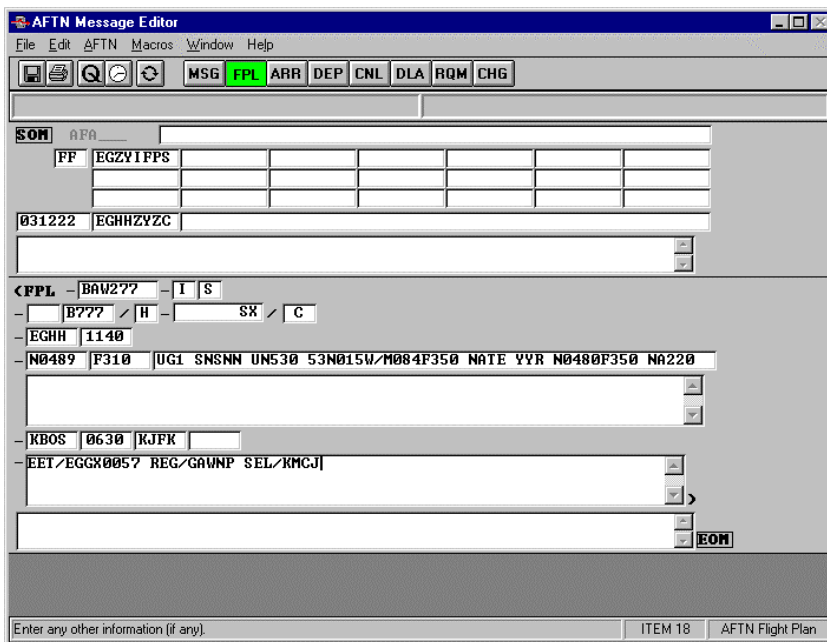
AFTERM consists of Copperchase proprietary software running on standard PC's. The Copperchase hardware and software platforms are well-proven through extensive use within the AFTN Network and commercially operated message switches worldwide. An ongoing development programme ensures that the software keeps pace with technological advances.

### Flexible

AFTERM allows for both ITA2 (Baudot) and ITA5 (ASCII) character formats to be used. It can also be provided in a variety of configurations to suit individual usage, such as integration to other systems and networks. Line speeds ranging from 50 - 9,600 bits per second (BPS) are defined in configuration tables during installation. AFTERM can equally be supplied configured to allow interconnection to a dedicated Telex line. AFTERM can be supplied as a complete, fully configured terminal; or as software only, for installation on your existing/preferred hardware.

### User Friendly

The Man Machine Interface for AFTERM is driven by user-friendly menu systems based in MS Windows, reassuringly familiar to the majority of users, intuitively simple to learn for those new to computers.



**Completed AFTN Flight Plan Form-fill**

AFTERM software includes an AFTN Message Editor consisting of intelligent Form-fills. These forms are based on standard Flight Plans and other message formats as defined in Doc. 4444 (customised forms can also be developed on request.) Operators accustomed to completing Flight Plans will find the forms easily recognisable.

*PC-based AFTN  
Message Processing  
Terminal with  
optional integration  
to other Air Traffic  
Control Systems*

## STANDARD FEATURES

- Message preparation, edit and print
- Message archive and retrieval
- AFTN Message format verification
- Automatic inclusion of generic data
- Automatic Journalling
- Message search/recall using reference or text string
- Auto-print or auto-queue pending operator action

## INCLUDES

- 1 x Industry standard PC
- 1 x Dot matrix printer

**OPTIONS**

May be simply upgraded to the Copperchase AFTN Distributor/Concentrator AFGATE

The Editor provides basic word-processing facilities together with an understanding of different AFTN message formats. Message format is restricted to lines of 69 characters with automatic word wrap.

Standard cursor movements are provided in the Editor, with the ability to toggle between Insert and Over-type modes, selecting a block of text to move copy or delete it. Blocks can also be saved or inserted to or from disk, which is useful for common address lists.

The menu set-up allows the operator to produce any available AFTN message format through one simple keystroke. These messages include Arrivals, Departures, Slot Requests, Cancellations and so on.

The Editor software automatically generates generic information including message header, originator code, date/time line and end of Message (EOM) for each message. Automatic addressing can be inserted using the extensive macro facility.

The Message Editor automatically verifies each piece of information during input checking for consistency with AFTN Message Format. This covers AFTN Address format verification, including IFPS; required fields and permissible entry ranges. A constantly visible 'Help line' at the bottom left of the screen provides context sensitive assistance with the completion of each field.

**Standard AFTERM Features and facilities*****AFTN Line Interface***

This module provides outgoing message format generation. It supports ITA-2 or ITA-5 character sets and is approved by the UK CAA for use on the UK Network and is in use worldwide.

***Journal and Archive***

Received and transmitted message text and the Message Journal are stored in an integrated database to allow easy searching and retrieval. There is sufficient disk storage to leave the archive database on-line for at least 30 days. There are also facilities to transfer the archive database to external media (e.g. floppy disk) for storage or additional analysis elsewhere.

The Journal and Archive function provides a facility to keep off-site logs, statistical analysis (long term) and enables 30 days traffic to be stored on floppy disk as required by Civil Aviation Standards.

***Telecoms Interfaces***

Dial-up PSTN, Telegraph, Fax, Telex, X25/X400, TCP/IP(Internet).



Datasheet Reference: DS2 02/02/01

**APECUS Technologies Pte Ltd**

1090 Lower Delta Road #07-08/09 Singapore 169201  
Tel: (65) 6273 9100 Fax: (65) 6273 8113  
Email: sales@apecus.com  
Web: www.apecus.com