

AFGATE

Copperchase AFGATE for Windows

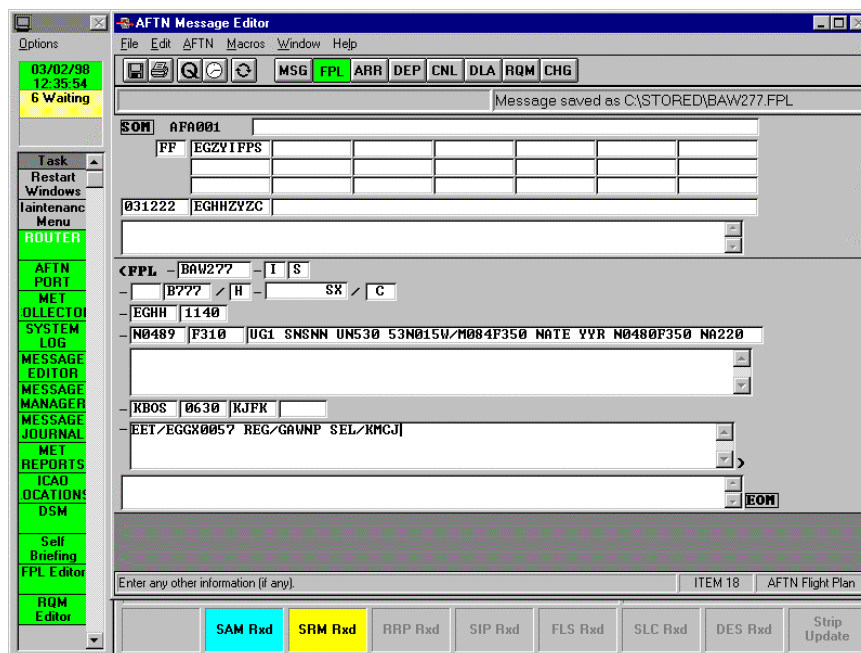
AFGATE provides a solution for airports requiring distribution and collection of AFTN messages to and from a central message switch. Messages can be routed by AFTN address or message type. The distributor assists Flight Plan Management by automatically routing certain message types to specific terminals or printers. At the same time you can prevent these peripherals from receiving unnecessary flight plan information. Use of AFGATE can also provide cost saving benefits. It acts as a collection point for all AFTN messages, thus reducing AFTN connections to a single location, without compromise to service.

Modern Technology

AFGATE consists of Copperchase proprietary software running on standard PC's. The Copperchase hardware and software platforms are well proven through extensive use within the AFTN Network and commercially operated message switches worldwide. An ongoing development programme ensures that the software keeps pace with technological advances. Having the same message processing functionality as AFTERM, it can also handle up to 8 serial connections with additional hardware upgrades, and is supplied configured for each application.

User Friendly

The Man Machine Interface for AFGATE is driven by user-friendly menu systems based in MS Windows, reassuringly familiar to the majority of users, intuitively simple to learn for those new to computers.



AFGATE Full Screen sample including DSM

The button bar to the left (above) is the system manager. All of AFGATE's powerful functionality is held easily available, just point and click. The in-built editor allows the Operator to input Flight Plan data using Form-fills based on the standard Flight Plans and other messages.

Standard AFGATE Features and facilities

AFTN Line Interface

This module provides outgoing message format generation. It supports ITA2 (Baudot) or ITA5 (ASCII) character sets and is approved by the UK CAA for use on the UK Network and is in use world-wide on other AFTN networks.

A PC-based store and forward communications gateway for AFTN messaging & distribution applications.

STANDARD FEATURES

User-friendly, Windows™ based

Routing via Address or Message Type

Selective Auto-routing of specific Message types to designated terminals/printer

System button bar for ease of access to AFGATE functions

Flight Plan form-fill based on ICAO

Doc.4444 includes auto-generation of standard data

AFTN Message preparation, edit, print, archive and retrieval

AFTN format verification

Automatic journaling

Routing set-up for AFTN connection and two additional AFTN stations

INCLUDES

1 x Industry standard PC (8 serial ports & network card)

1 x Dot matrix printer

OPTIONS

Additional Serial and/or Network Ports (up to 10) can be provided.

Journal and Archive

Received and transmitted message text and the message Journal are stored in an integrated database to allow easy searching and retrieval. There is sufficient disk storage to leave the archive database on-line for at least 30 days. There are facilities to transfer the archive database to external media (e.g. floppy disk) for storage or additional analysis elsewhere.

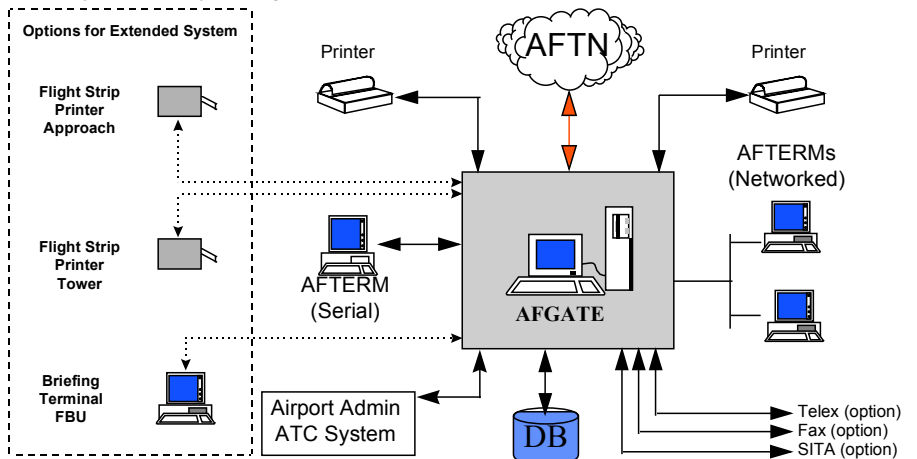
The Journal and Archive function provides a facility to keep off-site logs, statistical analysis (long term) and enables 30 days traffic to be stored on floppy disk as required by Civil Aviation Standard.

Routing

This module supports local routing by AFTN address and message type (eg..FPL,.MET). This provides a significant benefit for users who only require specific data from the AFTN circuits, i.e. MET only or FPL. The routing tables can be changed on line without stopping the system. The system handles local groups.

A Typical AFGATE System Configuration (Non Standard)

AFGATE can be used at airfields and other locations that require an AFTN connection with the option to provide multiple connections and message distribution to other users. AFGATE provides enhanced benefits and improved handling facilities for all AFTN messaging, including wider availability for TACT/CASA messages, NOTAMS and MET information. It provides connection to the main switching system using one or more circuits. The System allows for on-line configuration, which enables you to make upgrades and any necessary changes while it is still in operation.



Datasheet Reference: DS1 02/02/01

UPGRADE OPTIONS

See Datasheet

Briefing	Software module giving terminal access to briefing databases held on a Copperchase AFGATE.	DS5
DSM	Departure Slot Monitor displaying incoming CASA generated messages in colour-coded screen format.	DS6
FDMS	Flight Data Management module for arrival, departure and overflights including deferred strip printing and Wake Vortex conversion.	DS7
Telecomms Interfaces	Dial-up PSTN, Telegraph, Fax, Telex, X25 / X400, TCP/IP (Internet).	
WEDIT	Met Actual Report Editor for the generation of correctly formatted and addressed METARs.	DS3
Net Back-up	Secondary PC running a mirror system. In the event of primary failure, manual changeover of the AFTN link minimises downtime.	
SITA	Allows reception and transmission of SITA messages over AFTN network and vice versa.	DS9

APECUS Technologies Pte Ltd

1090 Lower Delta Road #07-08/09 Singapore 169201
 Tel: (65) 6273 9100 Fax: (65) 6273 8113
 Email: sales@apecus.com
 Web: www.apecus.com